



# Rural Emergency Hospital Technical Assistance Center

An initiative of the Rural Health Redesign Center (RHRC)

# Introduction to the Rural Health Redesign Center



## MISSION

The RHRC's mission is to protect access to high quality healthcare in rural Pennsylvania and the nation.



## VISION

Through partnership, improve the health and wellness of rural communities.



# The RHRC's Technical Assistance Center (REH-TAC)

REH-TAC is funded by the  
Health Resources and  
Services Administration  
(HRSA) of the U.S. Department  
of Health and Human Services



# REH Technical Assistance Center

## About the REH Technical Assistance Center



A collaboration of multiple organizations with unique expertise formed to provide a comprehensive catalog of technical assistance services to support REH consideration and transition



Rural Health Redesign Center  
Mathematica  
EMS Premier Consulting  
JSR Marketing  
Hall Render  
+ More

**Leveraging collective experience and a commitment to improving the lives within rural communities, the Center is equipped to provide thorough technical assistance in alignment with the terms of their cooperative agreement with the Health Services and Resources Administration (HRSA).**

# The REH Technical Assistance Center's Approach



## Approach

Work cooperatively with HRSA, State Offices of Rural Health, and Flex Coordinators to identify interested hospitals

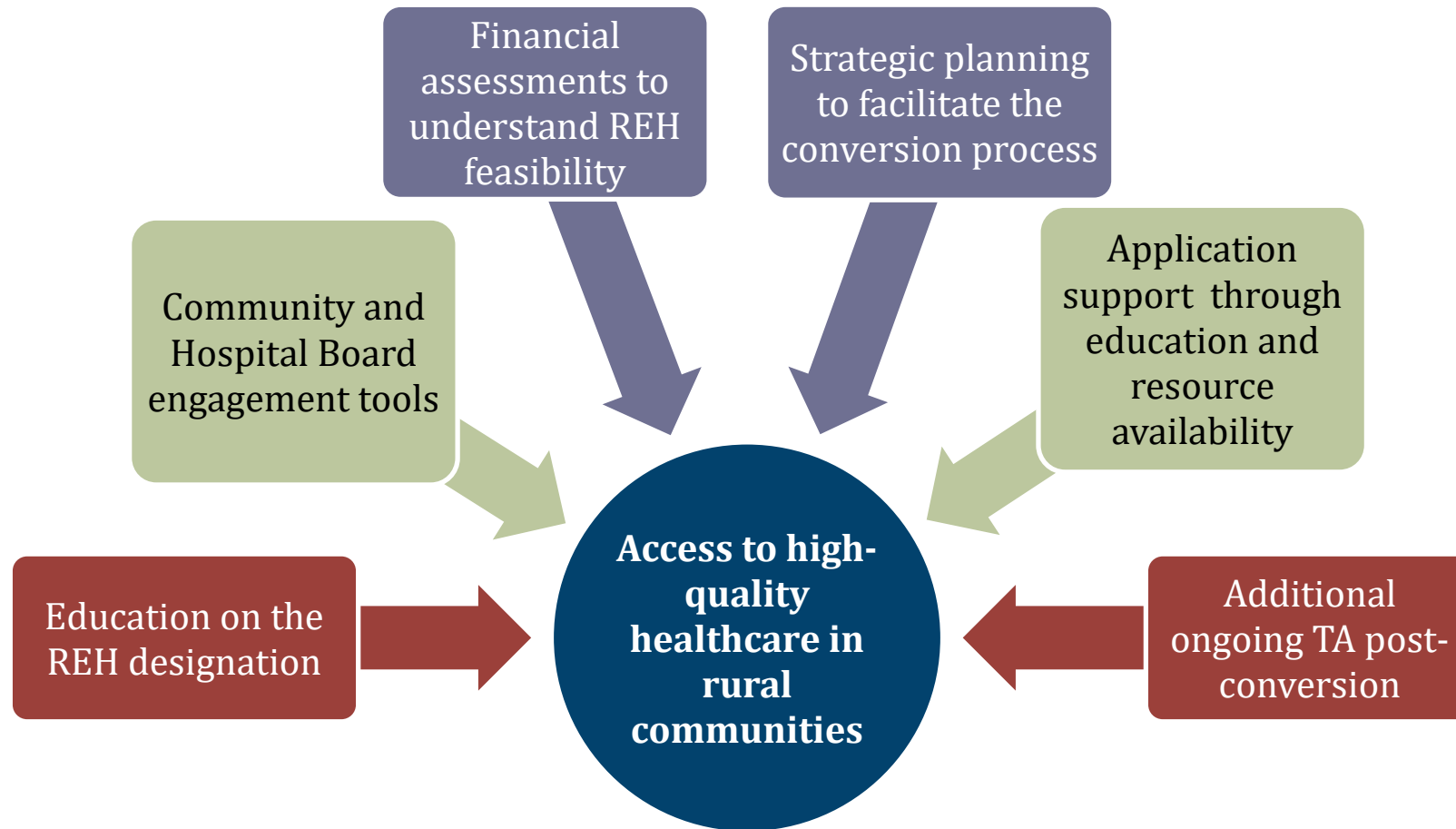
Respond quickly to direct inquiries made through our support line:  
[REHSupport@rhrco.org](mailto:REHSupport@rhrco.org)

Protect the identify of each hospital organization we work with through a NDA

Provide a rural-relevant subject matter expert/coach for 1:1 guidance and support

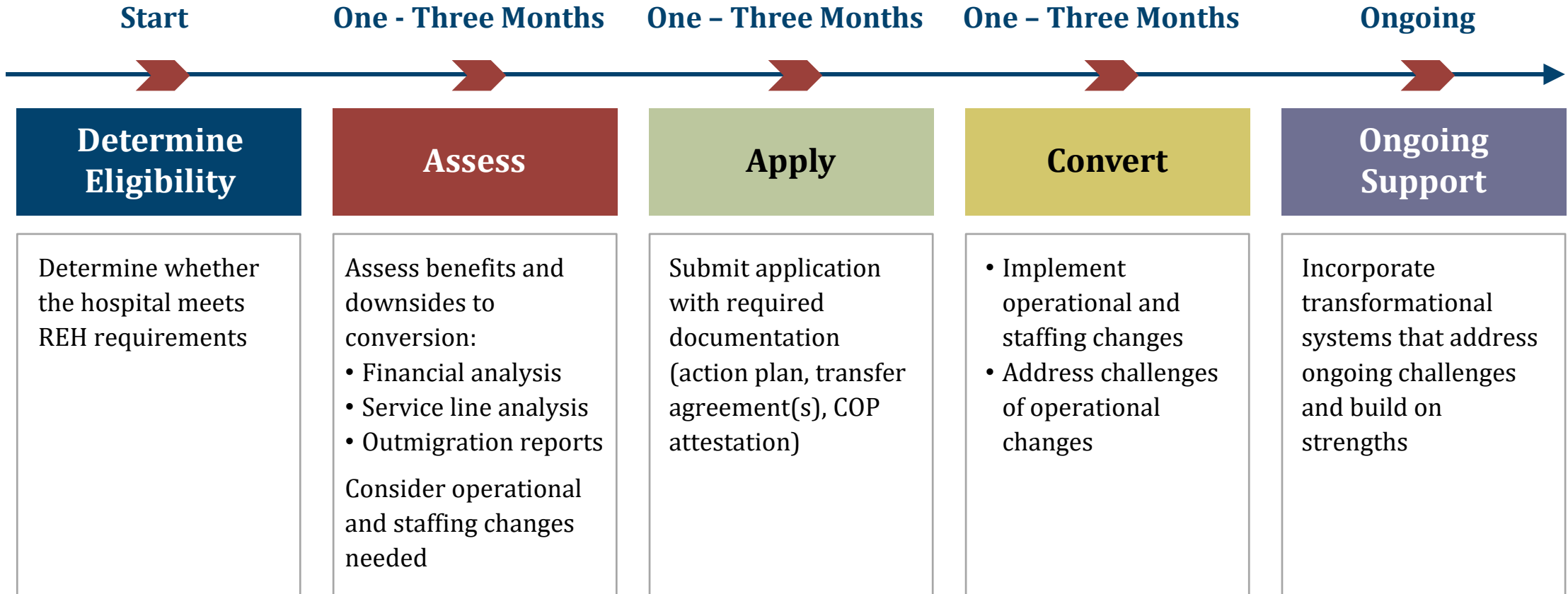
# Assistance for REH Assessment & Conversion

“ We participated in the [assessment] process and found it extremely beneficial to network with other organizations across the country navigating similar issues with the new designation. We look forward to continuing the conversation as we move into the execution phase of the REH.”



Technical Assistance Services Provided at **NO COST** to hospitals

# REH Assessment & Conversion Process



Please reach out to the RHRC if this timeline creates a barrier to consideration

# Peer Network for Converted REHs



## Why Join?

The REH Peer Network fosters collaboration, peer-to-peer learning, educational symposiums, and one-on-one support.



## Who Can Join?

Hospital executives and administrators whose facilities have converted to the an REH



## When We Meet

The REH Peer forum meets the third Tuesday of each month 2:00–3:00 p.m. ET. Additional educational symposiums are hosted monthly.



# RHRC Offers a Variety of Rural Relevant Technical Assistance Including...



*Additional services may be available upon request*



# Get started with an Introductory Call

## Purpose

- Provide clear education on the Rural Emergency Hospital (REH) designation
- Answer hospital-specific questions
- Determine whether REH conversion is a logical fit based on your hospital's current services and environment

## What is Covered

- Overview of REH regulations and requirements
- Discussion of key operational considerations, including:
  - 340B Program participation
  - Swing bed services
  - State-level recognition of the REH designation
- Initial assessment of feasibility and readiness
- Explanation of next steps in the technical assistance process



# Contact Information



Reach out to RHRC, if you have questions or would like assistance determining feasibility for conversion

[REHSupport@RHRCO.org](mailto:REHSupport@RHRCO.org)



Sign up to receive email updates from the Rural Health Redesign Center

[RHRCO.org](http://RHRCO.org)



Visit the REH-TAC website directly to view more of the REH Resources available.

[RHRCO.org/REH-TAC](http://RHRCO.org/REH-TAC)

Follow us:  